

The "Forget global warming – pretend it's a horrible hoax" preseason issue for optimists....

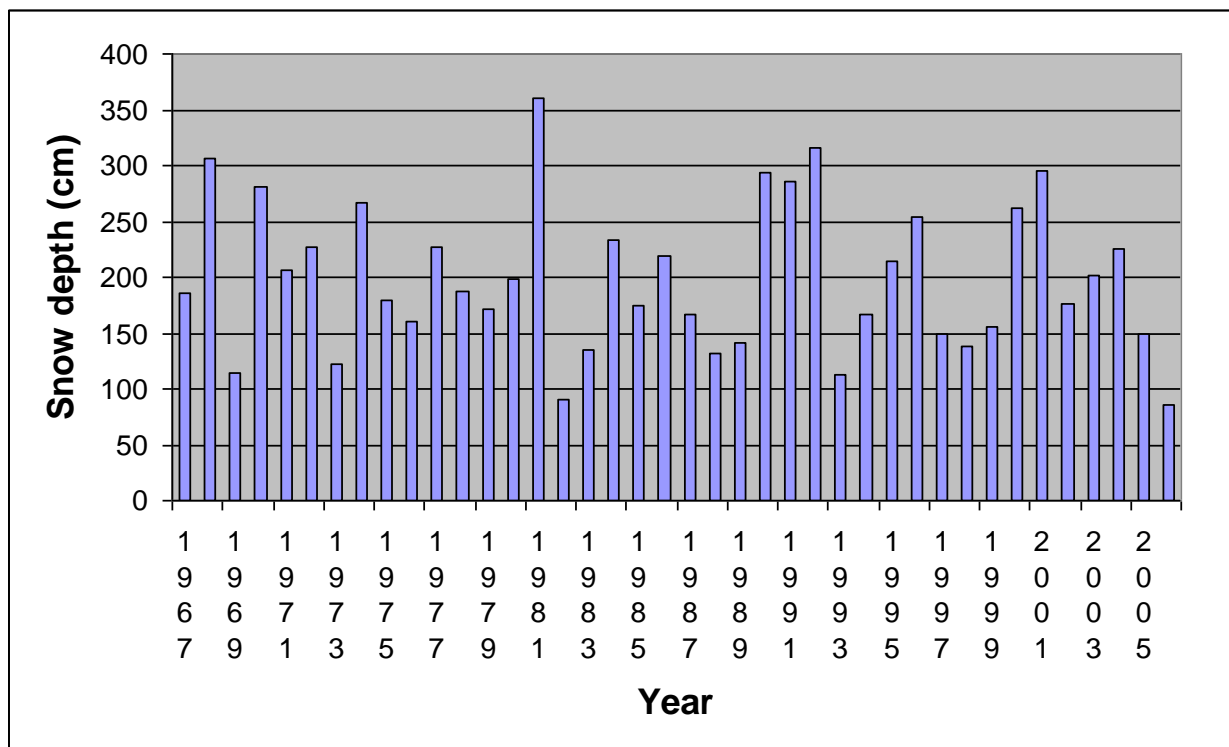
# ORMOND SKI CLUB

June, 2007

## NEWSLETTER

Ormond Ski Club, c/o 14 Bellevue St Richmond, 3121 A.B.N. 75 004 765 753  
 Website: <http://www.ormondskiclub.com.au>

### Snow depth. Snowy mountains Australia 1967-2006



**This issue:**

- Snow depth for pathetic optimists.**
- The OSC committee of optimists 2007.**
- The optimistic word from the presidents of the optimists ski club.**
- Bookings for idiot optimists.**
- The treasurer is optimistic too.**

This snow is a beautiful thing. More beautifully, despite the recent transformation of John Howard to a sickly green-grey colour, unless global warming only started in 2001, I see 40 years of data that suggest we could get anything from 175 cm to 275 cm this season. Go to [www.thredbo.com.au/images/pdf/SEPSnowdepthChart.pdf](http://www.thredbo.com.au/images/pdf/SEPSnowdepthChart.pdf) and look at the charts yourselves. You too

can inspect the entrails of the snow season and like your editor make fantastic predictions about snow depth. Life and the skiing season are too short to be pessimistic.

**The 2007 committee:**

- |                |                    |
|----------------|--------------------|
| Tom Nairn:     | President          |
| Susie Downie:  | Secretary          |
| Rohan Hodges:  | Treasurer          |
| Ross Cutler    | Editor and luddite |
| Timothy Chalke | Maintenance        |
| Meg Casey      | Bookings/Food      |
| Geoff Markley  | Membership         |
| Pip O'Donnell  | Recruitment        |
| Huw Llewellyn  | Students           |

**From the treasurer:** Cash flow is good with lots of bookings and most ( but not all) people who have booked paying up. With pressure on lodge use those who have booked but not paid should do so very quickly or you will find that you will lose your booking to someone who has paid. With the good cash flow the club has paid of another \$30,000 of its debt leaving just \$25,000 owing. If the snow keeps up and we get above average lodge usage for the season some more of the debt can probably be paid of before the end of the year.

**Booking experiences:** Those of you who know the editor will recognise him for the luddite he is. However, once Geoff Markley had, by immediate and return email, supplied, the password the bookings all worked excellently. It is an easy system. Costs are calculated in the system. A message, in the on-line booking form to the booking officer about a different buddy was sorted. Once Mrs Editor, who doubles as the company's chief financial officer and buddy, had been arm wrestled into paying by internet transfer confirmation all happened. I do not pretend to understand how it all works. I just believe in fairies..... and they (fairies) sell good chains on E bay too.

**Bookings:** Predictably the lodge is filling up (960 bed nights booked) and the peak weeks in August are mostly chocka. The weekends are heavily booked but bookings for the week of August 12 are **light**, so is the end of **July and first week of September** when the snow is usually good. In fact there is usually more snow in September than at any other time. Don't assume you can get in at the last minute. The club has been actively recruiting and we have an enthusiastic core skiing membership.

**Geoff Holberry-Morgan:** Geoff played an important part in the construction phase of the club and early in its tenure at Hotham. He and Ros have been regulars during the season at Hotham for many years. Members will be sorry to hear that recently Geoff has been unwell. He is fighting back and I am sure that members will join with me in offering encouraging energies towards his further recovery.

**Aspire to a political career.. start it off with a tour of duty on the OSC committee.** In 2008 There are likely to be a couple of positions open, including Food or Administration and in particular, **Maintenance**. We are seeking someone to take the baton from Chalky and continue his excellent work in 2008. Your editor

will be happy to hear of your interest and the president will be stalking the looking for aspirants.

**Lost:** Jane Fitzherbert, a partner of a member, has lost a small ladies' silver watch over opening weekend. It is a Fossil (brand) and has a blue/green face. If anyone finds said watch, they can email me at this address or alternatively Nick Reid at Reid.Nicholas@bcg.com or contact Jane on 0402 655 028.

**Lockers:** The lockers closest to the entrance to the locker room under the hole in the ceiling were moved in order to undertake repairs to the spa. Those members who have those lockers should be aware that equipment may have shifted when that move took place. I don't have a list of locker owners on me, but it's the lockers around Tim Samargis'. Anyway, I'm sure the people who own the relevant lockers are already well aware of who they are from previous attempts!

Last year, Lee Heard donated a copy of 'Hairy Chested History: a History of Hotham and Harrietteville' to the lodge. That book has gone **missing or fishing**. I'm pretty sure I was reading it earlier this year. If anyone has borrowed it over summer (or last year for that matter - we all know how grog addled the memory is) Lee and the Club generally would really appreciate it if it were returned early in the season.

Otherwise, lodge is ready to go and the skiing over opening weekend, while limited, was great fun.

See you up there,

**New couches** will be arriving shortly before student's week.

**Feedback welcomed: Write to:**

**The editor: Ross Cutler:**  
**rosscutler@mpx.com.au**

**Phone: 03 5255 5614**

**Fax: 03 5255 5613**